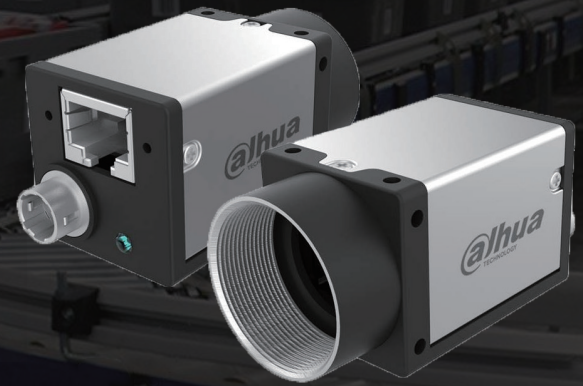


DH-MV-A7801MG400E

- 1Gbps Ethernet interface , max 100m transmission
- 128MB on-board frame buffer
- Support multiple image data formats
- Conform to CE, FCC, UL and RoHS certifications
- Software trigger/Hardware trigger/Free run mode
- Compatible with GigE Vision V2.0 protocol and GenICam standard



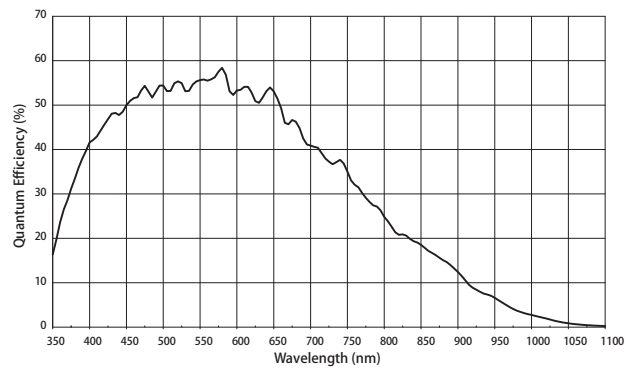
Specification

Model	Sensor	Sensor type	Shutter	Resolution	Frame rate (fps)	Bit depth	Interface	Mono/Color	Pixel size (μm)	Sensor size
DH-MV-A7801MG400E	XGS8000	CMOS	Global	4096 x 2160	13	12	GigE, POE	Mono	3.2 x 3.2	1/1.1"

Model	DH-MV-A7801MG400E
Effective Pixels	12MP
SNR	>38dB
Dynamic Range	70dB
GPIO	6 pin Hirose: 1 Opto-isolated input, 1 Opto-isolated output, 1 configurable input/output without opto isolation
Image Format	Mono8/10/10Packed/12/12Packed
Binning	Support
ROI	Support
Gain	X1~X32
Gamma	Range from 0 to 4, support LUT
Exposure Time	69μs~1s
Trigger Mode	Software trigger/Hardware trigger/Free run mode
Image Buffer	64MB
SPC	Support
User Setting	Support two sets of user-defined configurations
Dimensions	29mmx29mmx42mm(not including lens mount and rear case connector)
Weight	88g
Power Supply	POE/DC power supply by Hirose connector, with voltage range from 6V to 26V
Power Consumption	12V≈3.2W
Lens Mount	C
Temperature	Storage temperature:-30° C~ + 80° C; Operation temperature:-30° C~+50° C

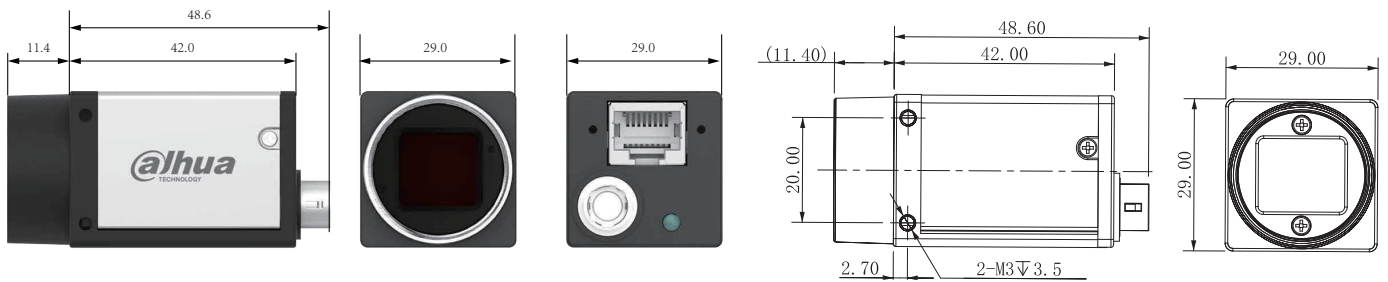
Spectrogram

A7801MG400E

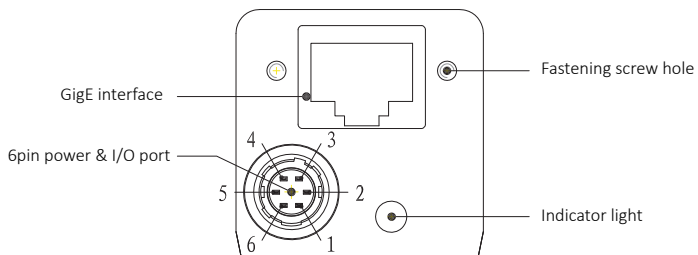


Quantum Efficiency Curve for Mono Sensor

Dimensions



IO Interface Instruction



Pin	Signal	Description
1	Power	DC 6V-26V input
2	Line1	Opto-isolated input
3	Line2	Configurable IO input/output
4	Line0	Opto-isolated output
5	IO GND	Opto-isolated ground
6	GND	Ground